



Architura® 1400 Series

ORGATECH®



| San Diego Blue Line Station's Train Shelter
Morrow Meadows Construction
San Diego CA

ORGATECH®

Since 1979 Orgatech® has consistently led the way in energy efficient, glare-free lighting. Our dedication to energy efficiency and visual comfort has always been at the heart of our mission. This commitment inspired us to thoughtfully embrace LED technology, ensuring that our standards for reducing glare and maintaining high-quality illumination are met.

Our steadfast adherence to these core values is evident in our latest designs, which truly realize the potential of LEDs without any sacrifices. The Architura® 1400 Series exemplify this approach, offering energy efficient, glare-free, cost-effective, and technically superior luminaires. These innovations are a testament to our dedication to advancing commercial lighting with LEDs.



Big Blue Bus HQ | Santa Monica, CA
Architura 1400/White / LH /45°
Designed by Dan Corson

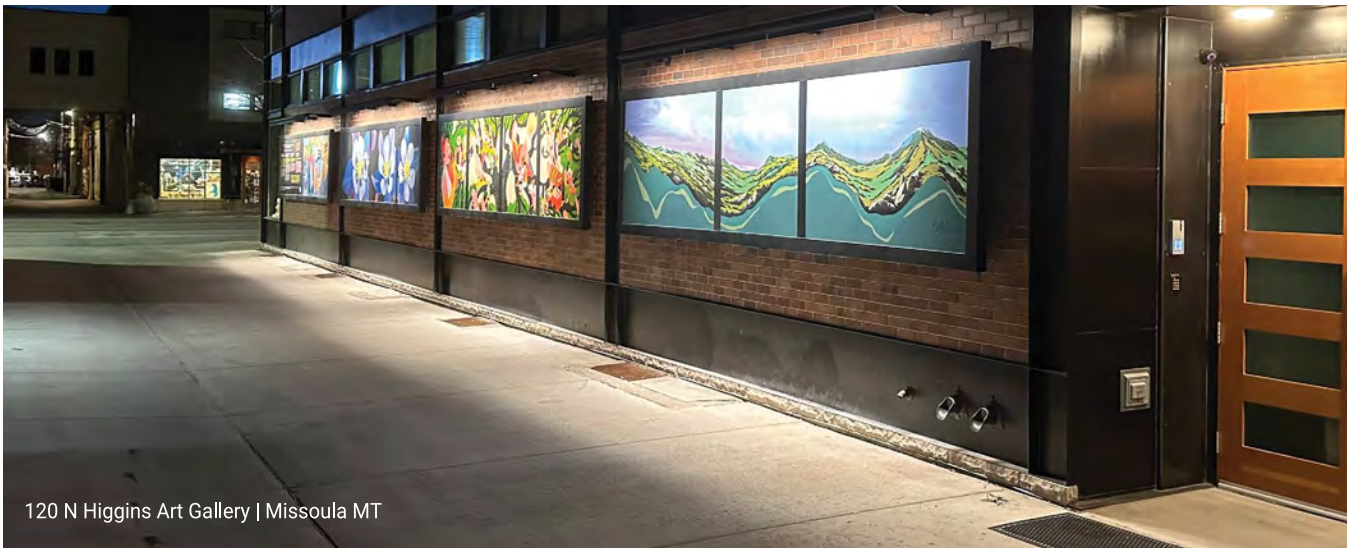


Architura® 1400

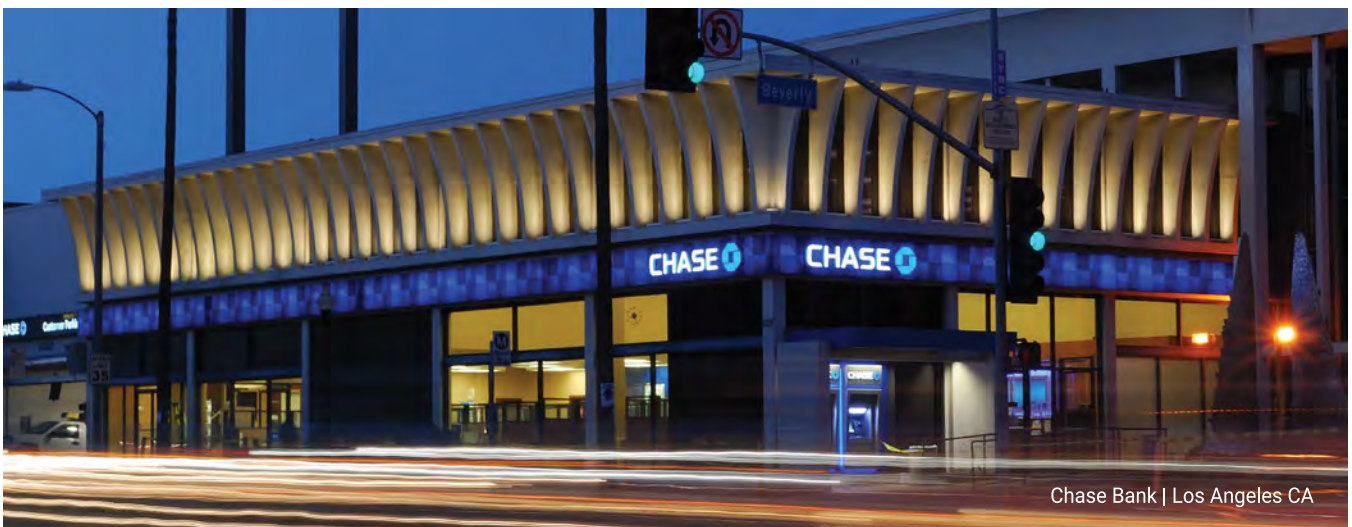
- 02 ABOUT ORGATECH
- 04 CONTENTS
- 05 ARCHITURA 1400 WHITE
- 07 ARCHITURA 1400 RGB & RGBW
- 09 ARCHITURA 1400 SIGNLIGHTER
- 11 PROFILE
- 12 ROW MOUNTING W/ HUB BRACKET
- 13 MOUNTINGS
- 14 ACCESSORIES



King of Prussia Mall | Philadelphia, PA



120 N Higgins Art Gallery | Missoula MT



Chase Bank | Los Angeles CA



Architura® 1400 White

The 1400 Architura® is a high performance linear luminaire for wallwashing, signlighting, and grazing exterior walls and facades. Stand alone or connectable in runs up to 295ft with Orgatech's patented thru-wiring system. Multiple lens options enable grazing or long throw, and floodlighting, and increase peak lumen output up to five times for high illuminance and improved energy efficiency. Cool running fixtures endure extreme climates. Perfect for facade and landscape applications, with unparalleled uniformity and color rendering.

Optics



Specs

Construction	Powder coated aluminum fixtures. Polycarbonate lenses.
White CCT	2700K, 3000K, 3500K, 4000K, 5000K
Dimming	Non-dimming, 0-10V Dimming, Forward Phase(TRIAC), Reverse Phase(ELV)
Optics	15°, 30°, 45°, 120°
Electrical	120-277V AC, Patented Row Interconnection or Daisy Chain with input/output IP67 Jumper Cables.
LED Wattage	LS 3.5W/ft (273lm/ft) / LH 4.5W/ft (351lm/ft) / LEH 6.7W/ft (523lm/ft)
Max Run	295ft
Environment	Wet Location - IP65. Operating Temperature - 22°F to 122°F
CRI	93+



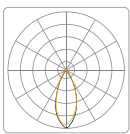
CATS LYNX BLE Parking Garage | Charlotte, NC



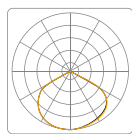
Architura® 1400 RGB & RGBW

Architura® 1400 RGBW is a high performance linear wallwash luminaire. Stand alone or connectable runs up to 200ft using Orgatech's® patented wire-thru connection system. Vibrant RGB-tri and RGBW-quad chip color mixing, achieved using advanced optical arrays, that mix and project the light, with unparalleled uniformity. DMX RDM programmable in per unit increments of 1ft, 2ft, 3ft, 4ft, 5ft, 6ft, 7ft, or 8ft or pixel addressing per unit in 1ft increments.

Optics



45°



120°



Specs

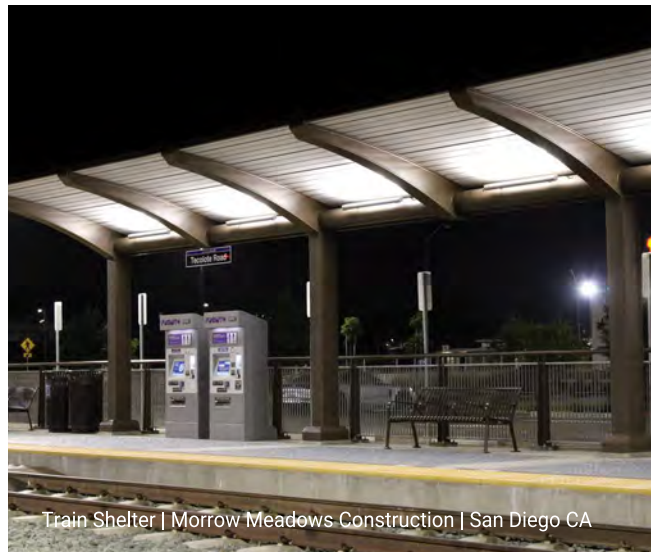
Construction	Powder coated aluminum fixtures. Polycarbonate lenses.
CCT	RGB, RGBW
Dimming	PWM / DMX w/ RDM
Optics	45°, 120°
Electrical	120-277V AC, Row Interconnection or Daisy Chain with input/output IP67 Jumper Cables.
LED Wattage	24V: RGB-2.7W/FT/ RGBW-5.8W/FT; U: RGB-3.1W/FT/RGBW-6.7W/FT
Max Run	24V - 20ft 120V - 80ft 240V - 140ft 277V - 200ft 347V available upon request
Environment	Wet Location - IP65. Operating Temperature - 22°F to 122°F
CRI	93+



Promenade Village Apartment Homes | Irvine CA



Villa Siena Apartment Homes | Irvine CA



Train Shelter | Morrow Meadows Construction | San Diego CA



Chase Bank | Los Angeles CA



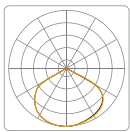
Del Amo Fashion Center | Torrance CA



Architura® 1400s Signlighter

Flicker-free driverless 120V or 277V AC LED Arrays. 2700K-5000K color temperature, field adjustable mounting options and custom finishes. Architura® 1400s Signlighter is a high-performance, high-value, plug and play linear fixture.

Optics



120°

Specs

Construction	Powder coated aluminum fixtures. Polycarbonate lenses.
Lengths (nom.)	1ft, 2ft, 3ft, 4ft, 5ft, 6ft, 7ft, 8ft
White CCT	2700K, 3000K, 3500K, 4000K, 5000K
Dimming	Non-dimming, Forward Phase (TRIAC), Reverse Phase (ELV)
Optics	120°
Electrical	120VAC or 277VAC
LED Wattage	LS 4W/ft (480lm/ft) - Standard / LH 8W/ft (960lm/ft)- High
Max Run	295ft
Environment	Wet Location - IP65. Operating Temperature - 22°F to 122°F
CRI	90+



Patented grooves
enables mounting to
slide along the
length of the fixture

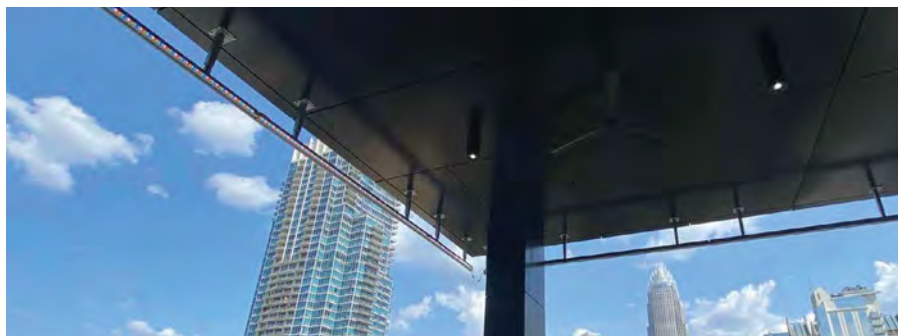


Architura's Patented Design

Engineered to deliver uniform, even, and glare-free illumination. The 1400 Architura is designed with every aspect of a build in mind, from the Architect to the end user. The 1400 Series are built with patented groove system that allows for complete field adjustment of all accessories and mounting systems. The 1400 Architura blends and illuminates any architectural design with ease.



Architura's Unique Wire-Thru Row Mounting



Using Orgatech's patented tool-less IP67 wire-thru connection system, the Architura 1400 can be aimed individually or all at once without any visible wires, making for a tidy and durable installation. Row mounting is available with swivel mount, sliding brackets, hub brackets, permaposts or extended arms.

Top Image: Architura 1400 RGB | Row Mounting w/ Extended Arm
500 W Trade Building | Charlotte, NC

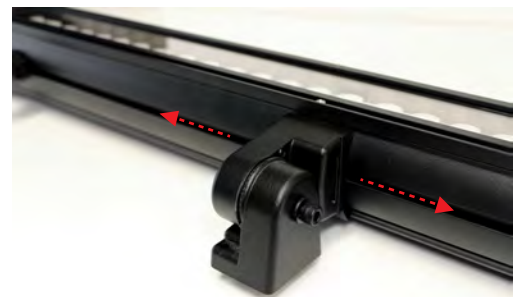
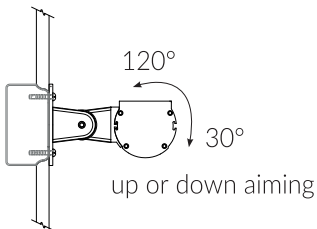
Hub Bracket

Heavy duty mounting arm with a choice of 4"-36" length used for row mounting of multiple fixtures. Locking set screws and fixture alignment brackets to secure fixtures after aiming included. Using Orgatech's Patented IP67 Wire-thru connection system, the 1400 Architura can be aimed individually or all at once without any visible wires.



Swivel Mount

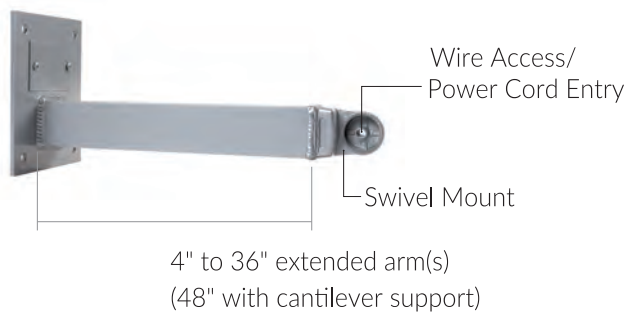
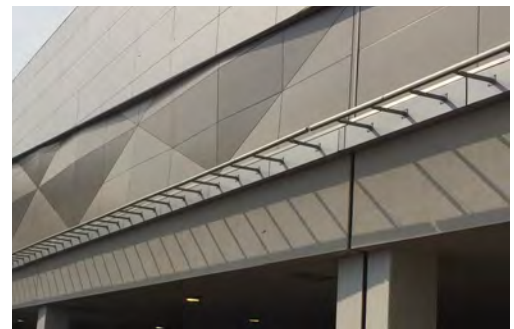
A heavy duty adjustable swivel mount with mounting plate. 1/2" nipple (can be specified) mounts directly to weatherproof canopies.



Swivel Mount is slidable along length of fixture.

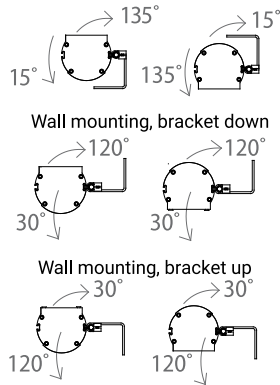
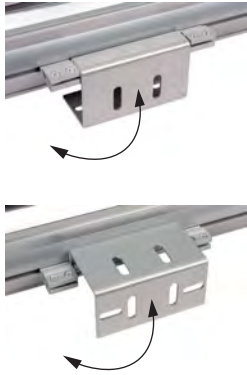
Extended Arm

With swivel mount, extended arm is available in 4"-36" lengths. Power cords can be routed through arms, exiting close to the wall to connect to an adjacent j-box or other power outlet, providing a tidy installation.



Sliding Bracket

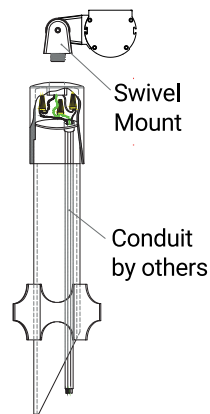
Can be surface or recessed mounted in position with 1/4" screws (not supplied). Fixtures 4ft + require two brackets. (Rows with Hubs - one bracket per fixture.)



Accessories

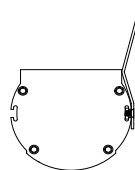
Permapost

Provides easy at-grade installation. Includes swivel mount with 1/2" nipple. Fixture must be mounted at least 4" above ground level to avoid water accumulation.



Glare Shield

Minimizes a direct glare, while maintaining the LED output.





Bldv Garage | Okland Construction | BWS Architects | City of Avondale | Avondale, AZ

Front Cover:

San Diego Blue Line Station's Train Shelter | Morrow Meadows Construction | San Diego CA



12203 Magnolia Avenue, Suite 1
Riverside, CA 92503
02/2024 V17
www.orgatech.com



626.969.6820
sales@orgatech.com